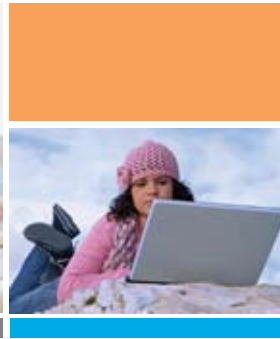


4-Channel, 64-bit  
Audio & Video Capture



## VIEWCAST ANALOG VIDEO CAPTURE CARDS

### The Osprey-440: Enabling Multi-Channel Video Capture

The Osprey-440 is a four-channel, multi-port audio and video capture card. This PCI-X card can simultaneously process four channels of full-motion (30 fps) video, and audio, from four NTSC or PAL analog sources.

The Osprey-440 features logo/bitmap overlay/watermark capability, audio gain control, and programmable audio sampling rates. Based on the reliability of the ViewCast®Osprey® Video capture card, the Osprey-440 provide multi-source capture through four composite (BNC) connectors on the faceplate plus additional video inputs via internal pins on the circuit board.

Audio input connectors are provided via a breakout cable for capturing from four different audio sources. The break-out cable provides four pairs of Unbalanced Stereo Audio (RCA) connectors. Internal audio pins are located on the circuit board for Balanced Stereo Audio input. Multiple cards may be used in a single system chassis.

The Osprey-440 is compatible with the Osprey SDK for development of media applications supporting Video-for-Windows and DirectShow.

### FEATURES

- Four-channel Video Processing Card with External and Internal Audio and Video Connectors
- Four Alarm Inputs and Four Dry Contact Outputs Provide One Input and Output Per Channel
- 16 Switchable Video Inputs Are Supported Plus 8 Audio Inputs
- Unique Video Processing Features Can Be Controlled Through Custom Development Using the Osprey SDK

### SPECIFICATIONS

- 4 Independent Channels
- 4 Composite (BNC) Video Inputs
- 4 Pair Unbalanced Stereo Audio Input (RCA Via Included Breakout Cable)
- 12 Additional Composite Video (3 Per Channel) Via Internal Pins, Switchable, Total 4 Per Channel
- 4 pair Balanced Stereo Audio Via Internal Pins
- VBI Data Extraction (Closed Caption, Teletext, VITC Time Code and Raw VBI)
- PCI-X, 64-bit PCI Interface
- 32-bit/33 MHz PCI Compatible
- 3.3 Volt PCI 2.3 Compliant
- 4 Alarm Inputs Via Internal Pins and 4 Dry Contact Outputs Via Internal Pins (Supported Through Osprey SDK)
- NTSC, PAL
- Osprey SimulStream® and Niagara SCX® Ready
- FCC Class A, UL Listed Accessory
- Windows® XP, Windows® Server 2003



For more information on ViewCast products, visit [www.viewcast.com](http://www.viewcast.com).